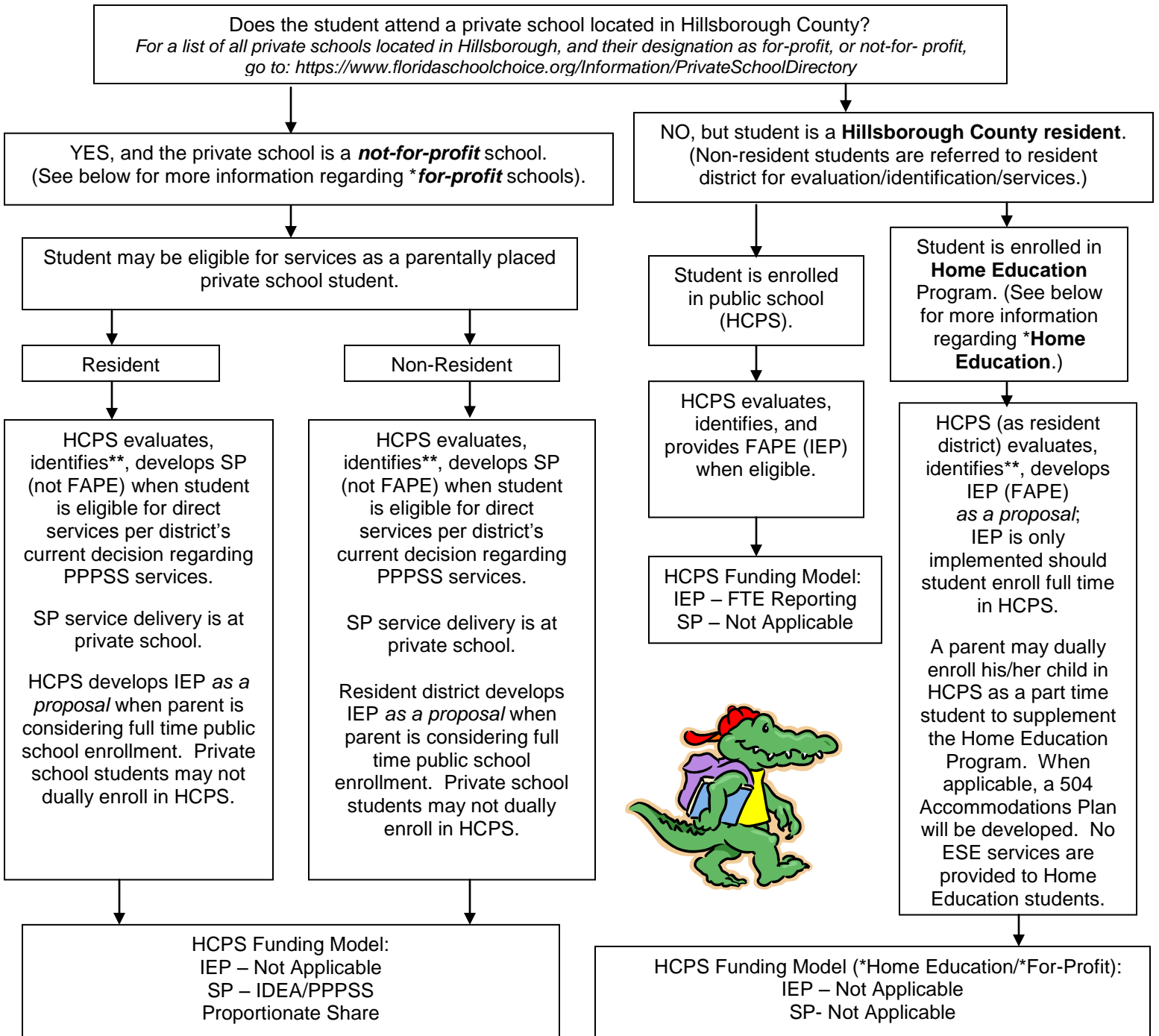


Department of Exceptional Student Education

Evaluation/Identification/ESE Services Flow Chart for Students Enrolled
In Grades Kindergarten through Twelve
Determination of IEP (Individual Educational Plan) or Services Plan (SP)



*For students enrolled in **for-profit** schools or **Home Education**, the resident district evaluates, identifies and offers a proposed IEP to the student, when the parent is considering full time enrollment in public school for his/her child. A proposed IEP is not implemented unless district full time enrollment occurs. If the parent declines the IEP proposal, a student enrolled in a for-profit private school or in Home Education is not eligible for a Services Plan.

**For students determined not eligible, no further district requirements.

Revised
7/13/11